

11 April 2011

FINANCIAL ACCOUNTS OF LITHUANIA FOR THE FOURTH QUARTER OF 2010

At the end of the fourth quarter of 2010, the [annual growth rate](#)¹ of Lithuania's financial assets (2%) exceeded that of liabilities (0.2%). In the same quarter of 2009, the named growth rates accounted for -2 per cent and -3 per cent, respectively (see Fig. 1 and Fig. 2).

Financial assets totalled LTL 319.8 billion. The major investment positions of financial assets were loans (27%), shares (26%), deposits (19%), and debt securities (10%).

At the end of the fourth quarter, Lithuania's liabilities totalled LTL 381.4 billion.. Loans and debt securities accounted for one third (34%) of total liabilities. In the fourth quarter of 2010, the ratio of loans and debt securities to financial assets made up 40 per cent.

Fig. 1. Financial assets of Lithuania
(Annual growth rate)

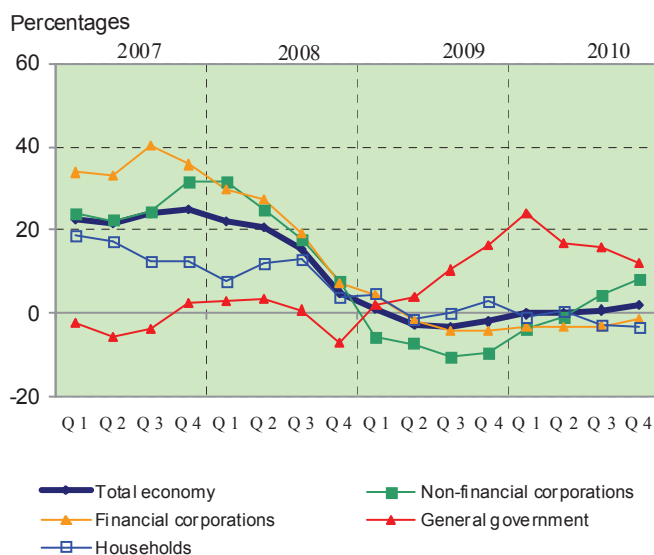
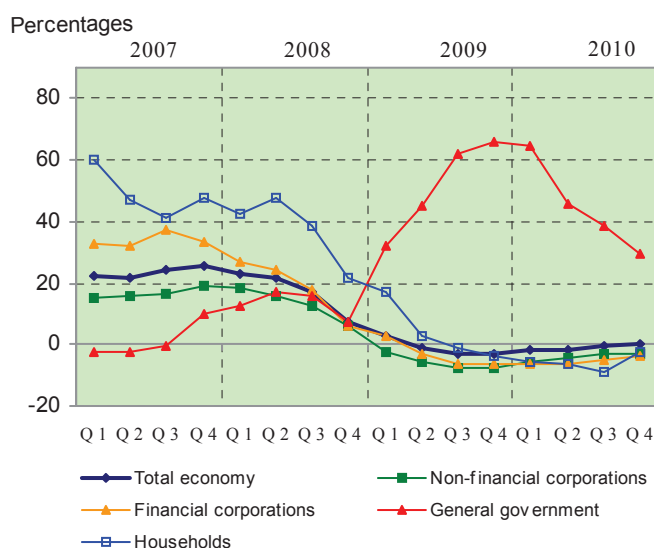


Fig. 2. Liabilities of Lithuania
(Annual growth rate)



¹ Annual growth rate is calculated by taking the difference between end quarters outstanding amounts and then removing the effects of revaluation adjustments, exchange rate adjustments, as well as other changes in volume.

This indicator remained broadly unchanged in recent years, except for the government sector, where the named ratio grew up to 120 per cent at the end of the fourth quarter (see Fig. 3).

The ratio of short-term financial assets to short-term liabilities made up 86 per cent at the end of the fourth quarter.

The rest of the world sector (non-residents) plays an important role in Lithuania's economy. In the fourth quarter of 2010, debt security holdings by non-residents accounted for 71 per cent of total debt securities issued in Lithuania. Annual growth rate of said securities equalled 50 per cent (see Fig. 4). Alike in the third quarter of 2010, non-residents owned 34 per cent of total shares issued in Lithuania which annual growth rate was 10 per cent (see Fig. 4). The largest portion of non-resident investment went to Lithuania's financial sector: they owned 93 per cent of shares issued by other monetary financial institutions (other MFIs)² and 77 per cent of shares issued by insurance corporations.

Fig. 3. Ratio of loans and debt securities to total financial assets
(End-of-period)

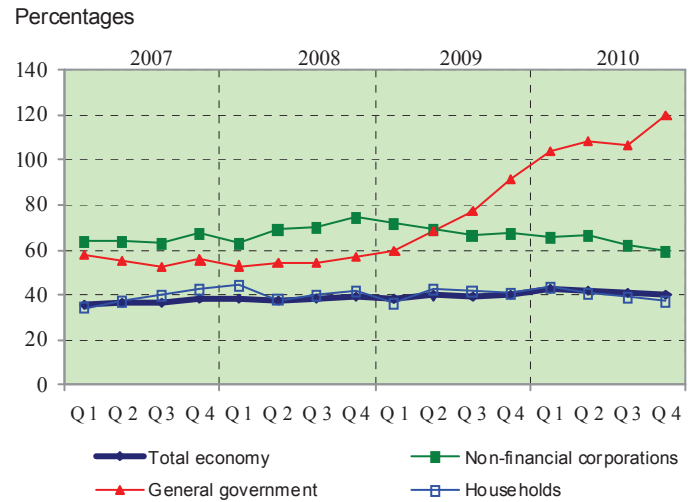
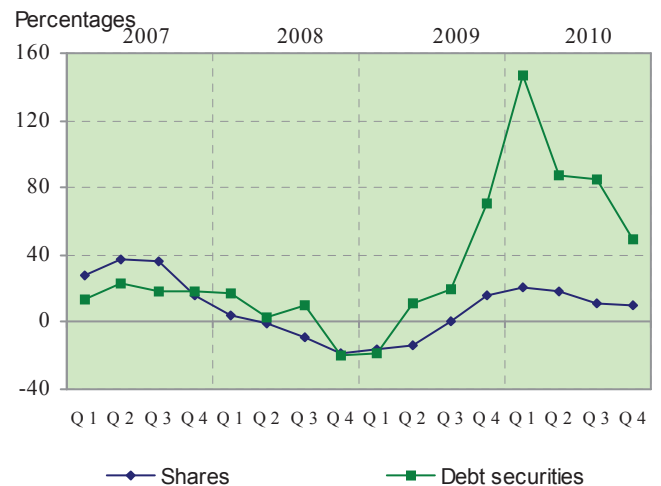


Fig. 4. Non-resident holdings of shares and debt securities issued in Lithuania
(Annual growth rate)



² Other MFIs cover banks, credit unions, branches of foreign banks, and money market funds.

FINANCIAL CORPORATIONS

Financial corporations by type of activity are grouped into other MFIs, other financial intermediaries (OFIs)³, financial auxiliaries, and insurance corporations and pension funds.

At the end of the fourth quarter, financial assets of other MFIs totalled LTL 87.7 billion, and their annual growth rate (-3%) was almost the same like a year ago (-3%; see Fig. 5). Loans accounted for almost three quarters (74%) of other MFIs' financial assets. However, their share in financial assets has declined gradually (at the end of the last quarter of 2009 it made up 75%). In the fourth quarter of 2010, short-term loans annually increased by 5 per cent, whereas long-term loans decreased by 5 per cent. Non-financial corporations and households were major borrowers of other MFIs. At the end of the quarter, short-term loans to non-financial corporations made up LTL 7.2 billion (66% of total short-term loans) and long-term loans amounted to LTL 22.2 billion (41% of total long-term loans; see Fig. 7). Short-term loans and long-term loans to households totalled respectively LTL 0.7 billion (6%) and LTL 26.8 billion (50%).

At the end of the fourth quarter of 2010, the liabilities of other MFIs amounted to LTL 87.6 billion with a negative annual growth rate of 4 per cent. In comparison, a year ago they declined to -5 per cent (see Fig. 6). Transferable deposits (29%) and other deposits (56%) accounted for the largest shares of liabilities.

Fig. 5. Financial assets of financial corporations
(Annual growth rate)

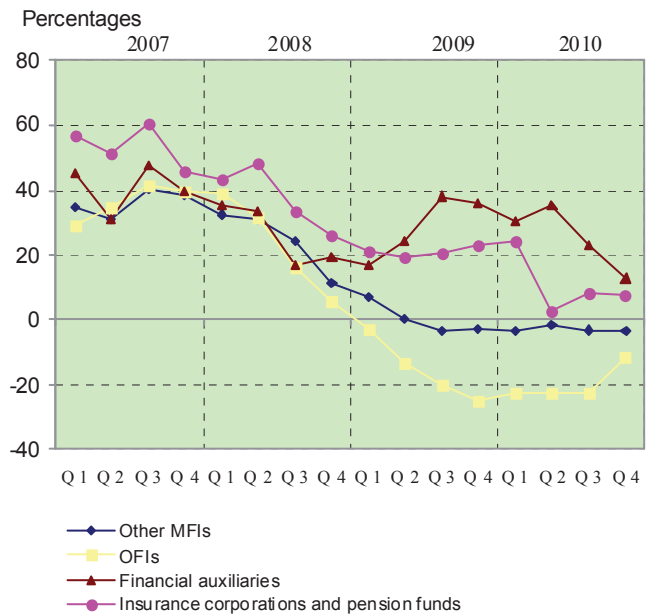
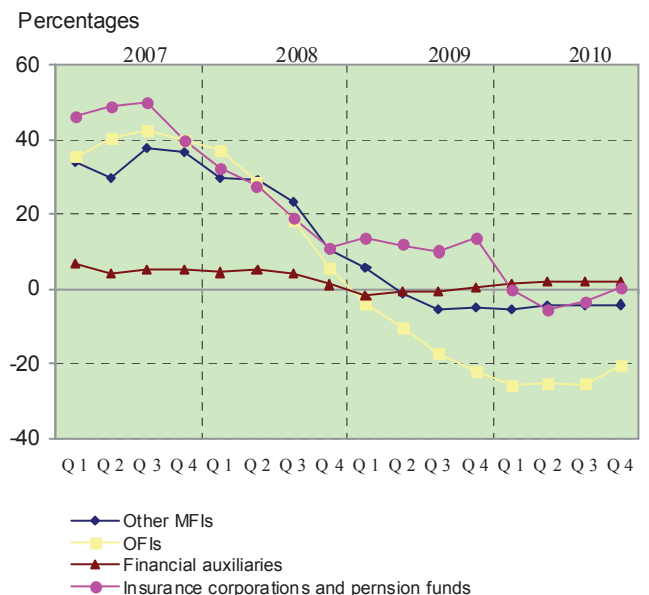


Fig. 6. Liabilities of financial corporations
(Annual growth rate)



³ OFIs cover financial leasing corporations and other corporations engaged in credit granting, and investment funds.

Financial assets of OFIs amounted to LTL 11.7 billion, and their annual growth rate dropped to -11 per cent. In the fourth quarter of 2009, annual growth rate was -25 per cent (see Fig. 5). As in the case of other MFIs, loans accounted for the largest share of OFIs' financial assets (61%). The largest portion of short-term loans (53%) was granted to non-residents, whereas largest portion of long-term loans (73%) was granted to non-financial corporations (see Fig. 8).

At the end of the fourth quarter, OFIs' liabilities equalled to LTL 10.7 billion. Their annual growth rate went down to -20 per cent, close to that in the fourth quarter of 2009 (-22%; see Fig. 6). Unlike other MFIs, OFIs accumulate funds through borrowing from other economic entities; consequently, both short-term loans (12%) and long-term loans (57%) made up the largest shares of their liabilities.

At the end of the fourth quarter, financial assets of insurance corporations and pension funds amounted to LTL 7 billion, and annual growth rate of these assets made up 8 per cent (in the corresponding quarter of 2009, the rate was 23%; see Fig. 5). A significant amount of funds accumulated by insurance corporations and pension funds in the form of insurance technical reserves and pension funds were invested into debt securities (42%) and shares of investment funds (43%).

Liabilities of insurance corporations and pension funds totalled LTL 7 billion, with the annual growth rate of 0.1 per cent, while in the fourth quarter of 2009 annual growth rate accounted for 13 per cent (see Fig. 6). At the end of the fourth quarter of 2010, pension funds and insurance technical reserves accounted respectively for 58 and 28 per cent of liabilities.

Fig. 7. Loans granted by other MFIs
(End-of-2010Q4)

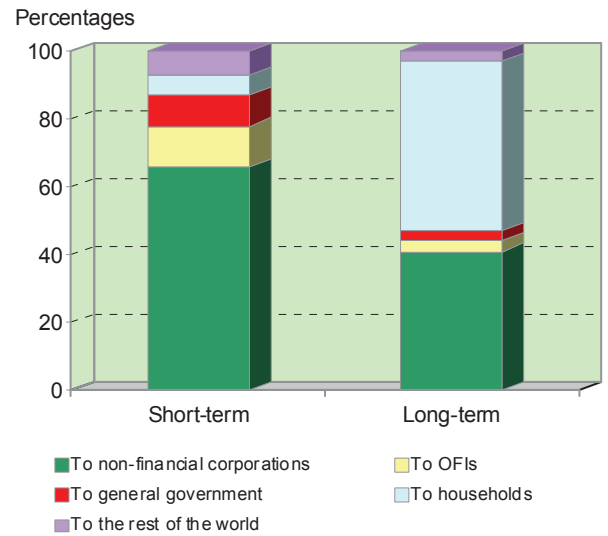
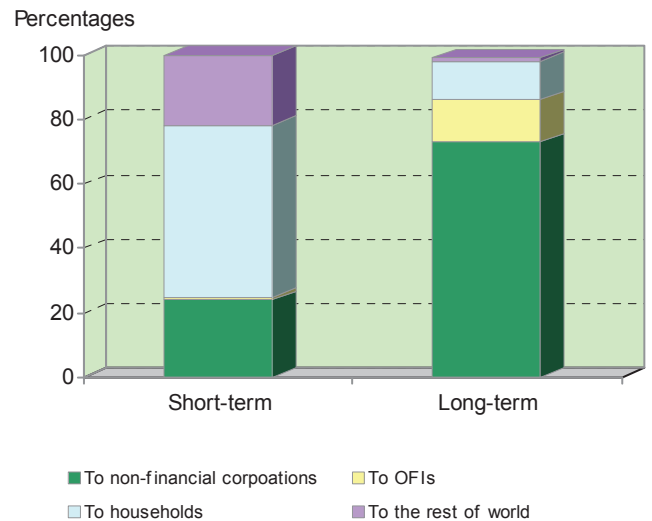


Fig. 8. Loans granted by OFIs
(End-of-2010Q4)



NON-FINANCIAL CORPORATIONS

At the end of the fourth quarter of 2010, financial assets of non-financial corporations amounted to LTL 79 billion, and their annual growth rate was 8 per cent (in the fourth quarter of 2009, it made up -10%; see Fig. 1).

For several years unquoted shares and other accounts receivable have accounted for the largest portions of financial assets. At the end of the fourth quarter, the named portions made up 26 and 39 per cent respectively (see Fig. 9).

At the end of the last quarter of 2010, liabilities of non-financial corporations totalled LTL 169.9 billion; their annual growth rate was negative (-3%), as well as in the fourth quarter of 2009 (-8%; see Fig. 2).

Unquoted shares and loans were the largest segments of liabilities, making up respectively 45 and 27 per cent (see Fig. 9). At the end of the fourth quarter, the amounts of short-term and long-term loans granted to non-financial corporations totalled, respectively, LTL 10.7 billion and LTL 35.7 billion. Loans received from other MFIs made up 67 per cent of all short-term loans and 62 per cent of all long-term loans. Non-financial corporations granted a significant portion of short-term loans (17%) to each other. Loans received from the rest of the world made up about 13 per cent of all short-term loans and 17 per cent of all long-term loans (see Fig. 10).

Fig. 9. Financial assets and liabilities of non-financial corporations
(End-of-2010Q4)

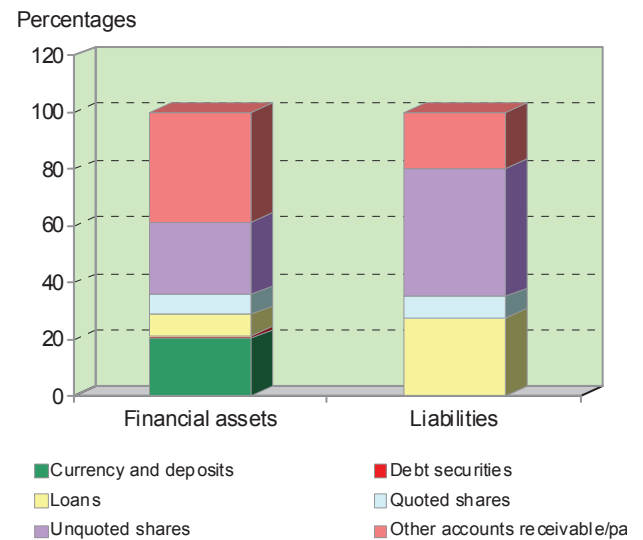
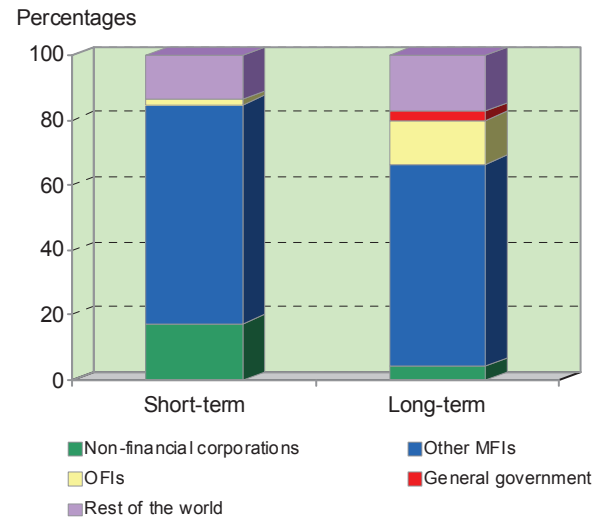


Fig. 10. Loans granted to non-financial corporations
(End-of-2010Q4)



HOUSEHOLDS

At the end of the last quarter of 2010, financial assets of households totalled LTL 76.2 billion; their annual growth rate was -3 per cent, while in the same quarter of 2009, annual growth rate was 3 per cent (see Fig. 1).

Shares, currency and deposits represented the largest segments of households' financial assets: 38 and 41 per cent respectively (see Fig. 11).

At the end of the quarter, liabilities of households amounted to LTL 37.6 billion. Their annual growth rate dropped to -3 per cent, similarly to that in the fourth quarter of 2009 (-4%; see Fig. 2).

Loans and other accounts payable made up, respectively, 76 and 24 per cent of the household liabilities (see Fig. 11).

At the end of the fourth quarter of 2010, financial assets of Lithuanian households per capita amounted to LTL 24 thousand, and liabilities per capita made up LTL 12 thousand.

Fig. 11. Financial assets and liabilities of households (End-of-2010Q4)

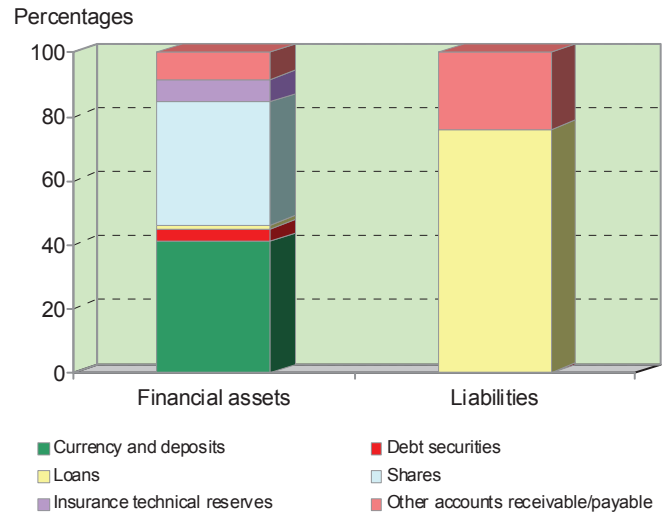


Fig. 12. Financial assets and liabilities of households (End-of-period, per capita)

