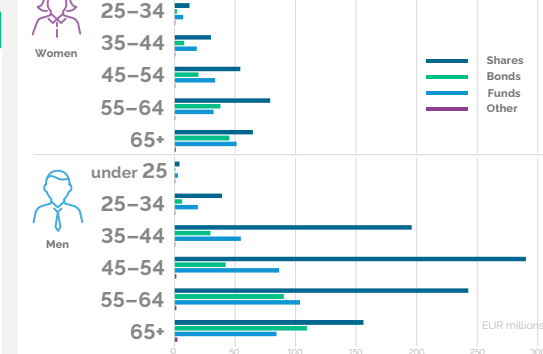
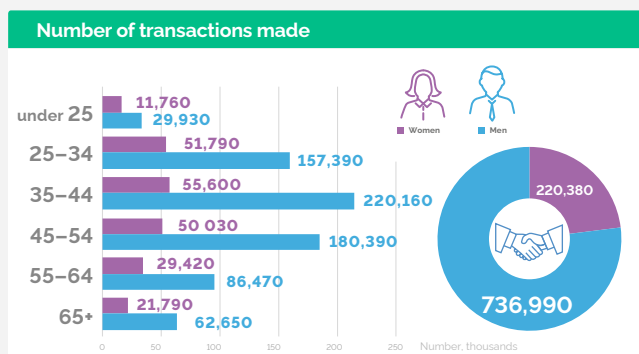
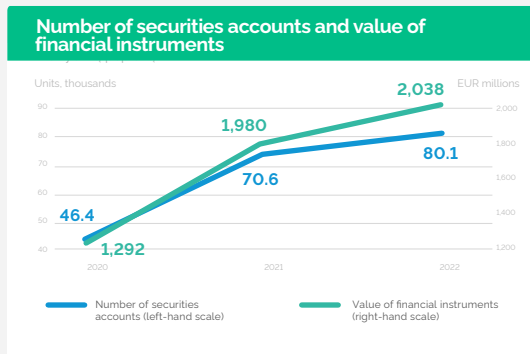
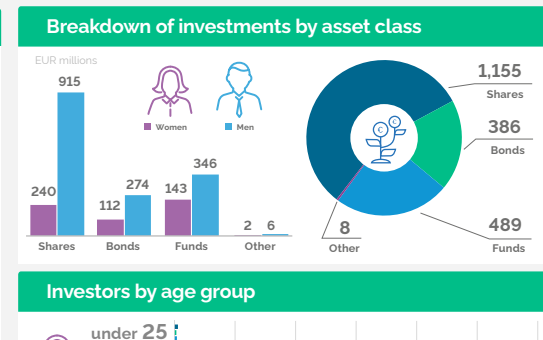
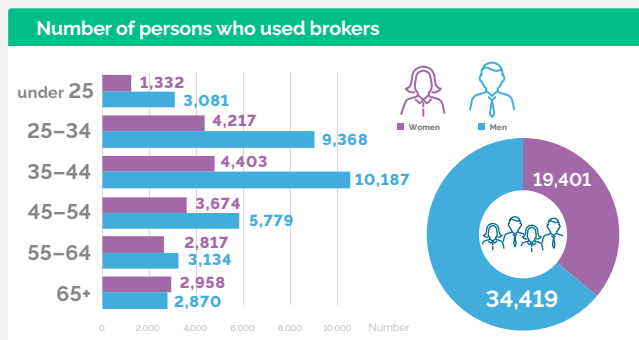
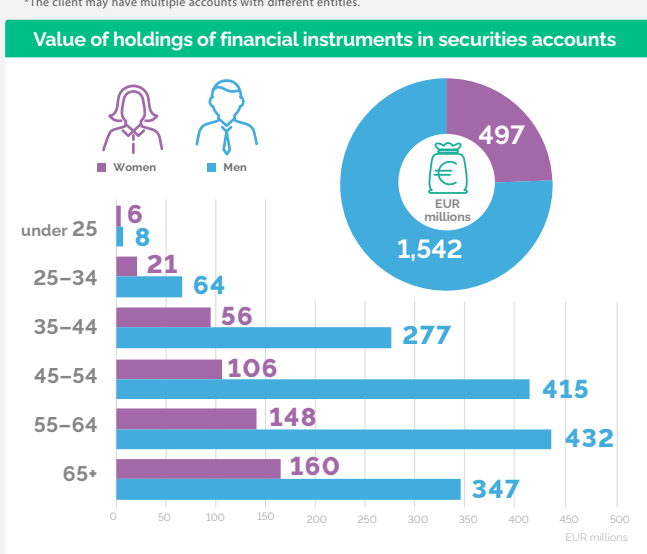
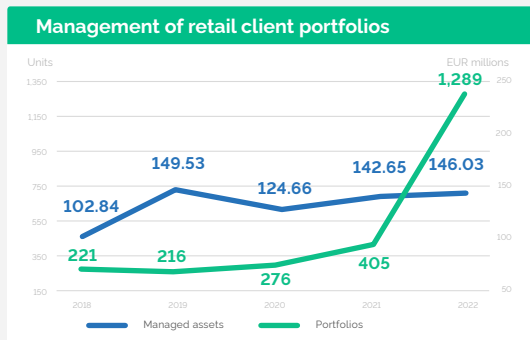
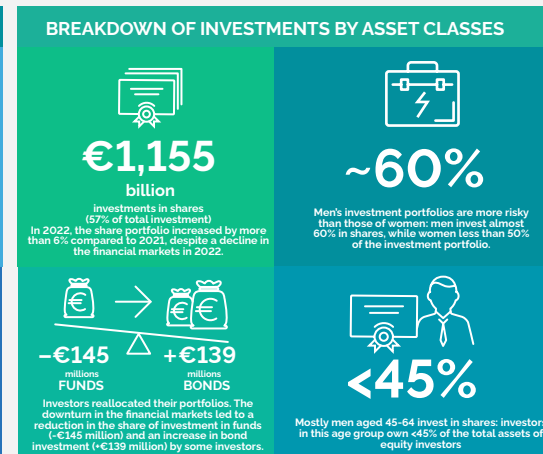
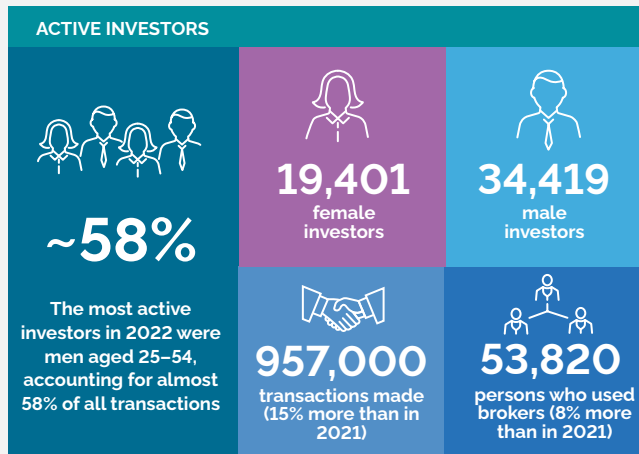
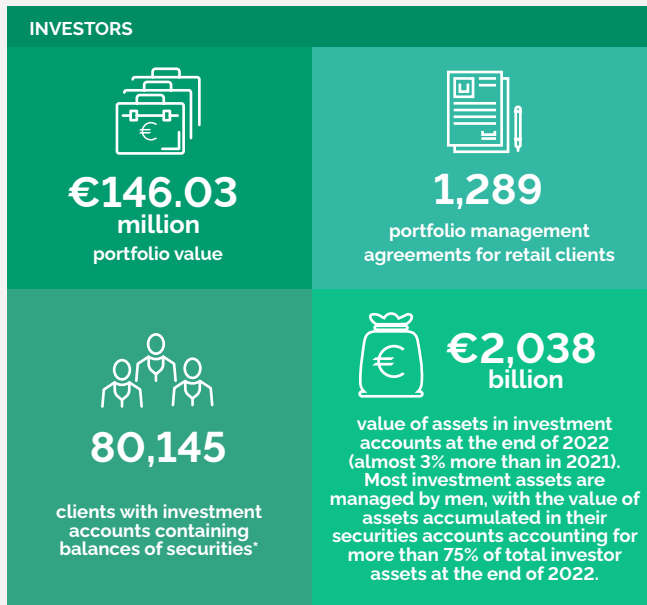


Profile of the Lithuanian investor / 2022










ISSN 3030-1181 (online)



Profile of the Lithuanian investor / 2022

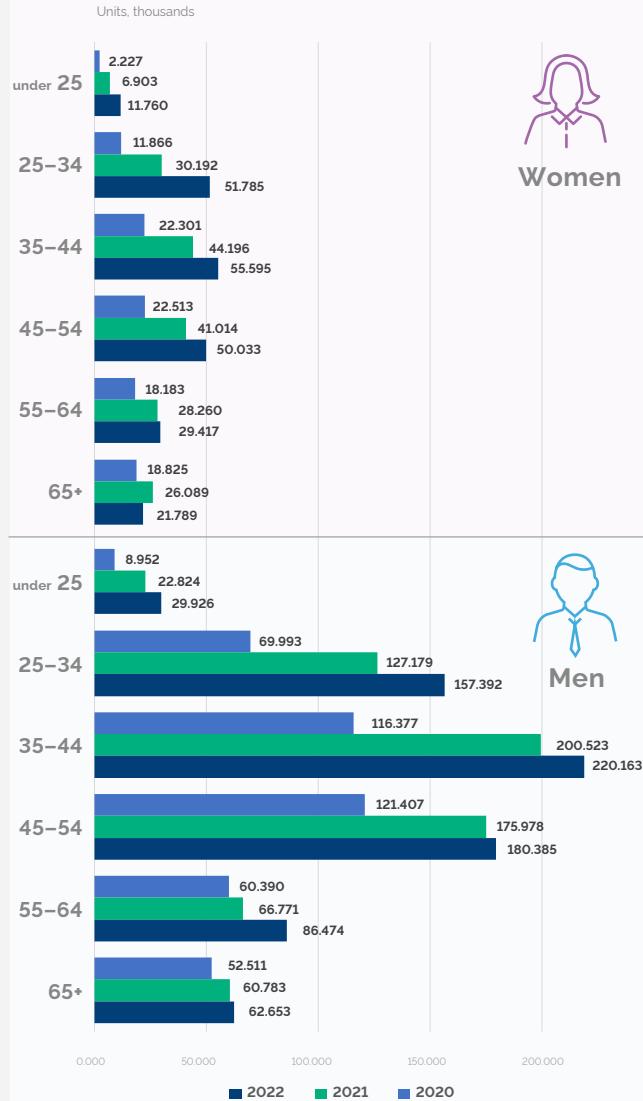


							Breakdown of holdings of financial instruments by asset class, EUR millions			
							shares	bonds	funds	other
 Women	under 25	1,332	11,760	5.949	2,694	1,367	2.780	1.234	1.926	0.000
	25-34	4,217	51,785	21.211	7,809	4,794	12.166	1.853	7.185	0.010
	35-44	4,403	55,595	55.742	10,908	7,289	29.781	7.677	18.133	0.140
	45-54	3,674	50,033	106.232	9,785	6,285	53.440	19.411	32.872	0.500
	55-64	2,817	29,417	147.763	8,269	5,001	77.758	37.383	31.912	0.720
	65+	2,958	21,789	159.721	13,717	5,928	63.614	44.508	50.753	0.850
 Men	under 25	3,081	29,926	7.635	7,784	2,815	4.194	0.533	2.900	0.010
	25-34	9,368	157,392	63.686	19,937	10,229	38.644	5.948	19.085	0.010
	35-44	10,187	220,163	276.738	24,057	15,251	193.077	29.237	53.814	0.610
	45-54	5,779	180,385	414.760	15,194	9,835	286.431	41.449	85.240	1.635
	55-64	3,134	86,474	431.896	9,308	5,897	239.329	88.963	102.158	1.455
	65+	2,870	62,653	347.111	10,796	5,454	153.768	107.808	83.092	2.431
Total		53,820	957,372	2,038.443	140,258	80,145	1,154.982	386.006	489.068	8.371

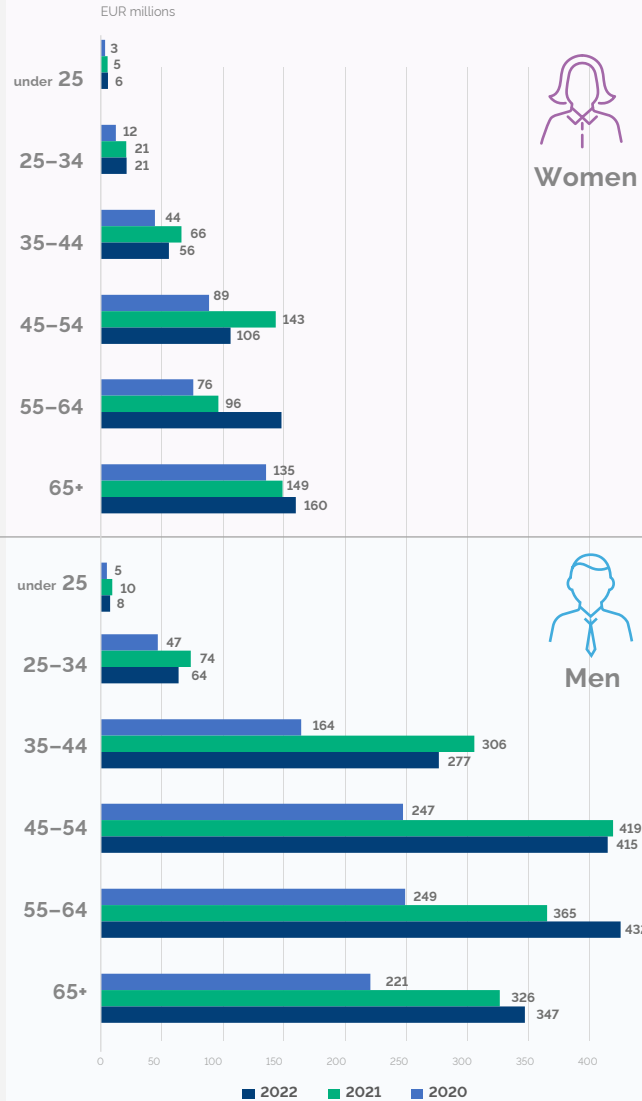
Comparison of the features of a Lithuanian investor / 2020–2022



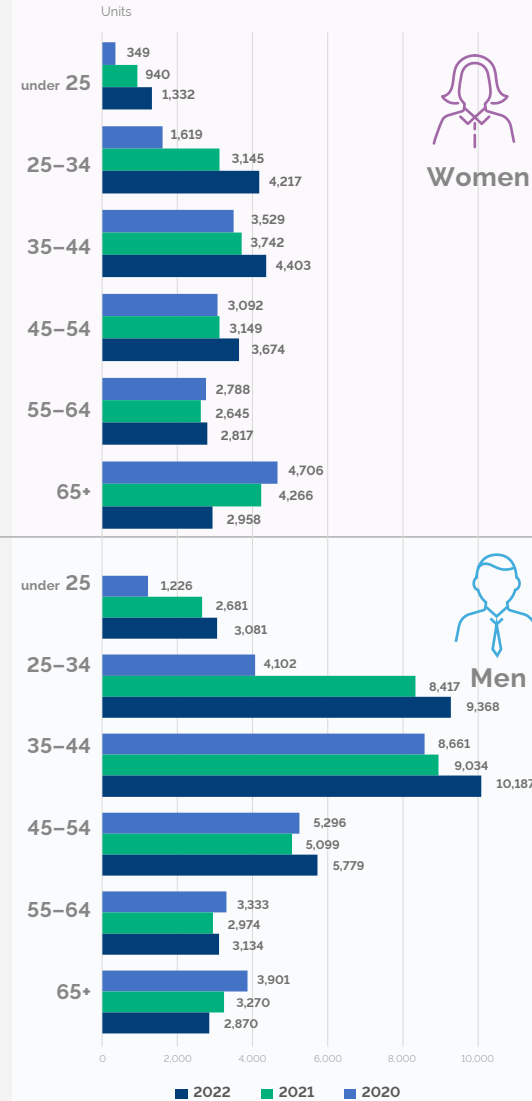
Number of transactions



Value of holdings of financial instruments in securities accounts



Number of persons who used brokers



Breakdown of investments by asset class and gender of investors

